

AS BUILT CERTIFICATE

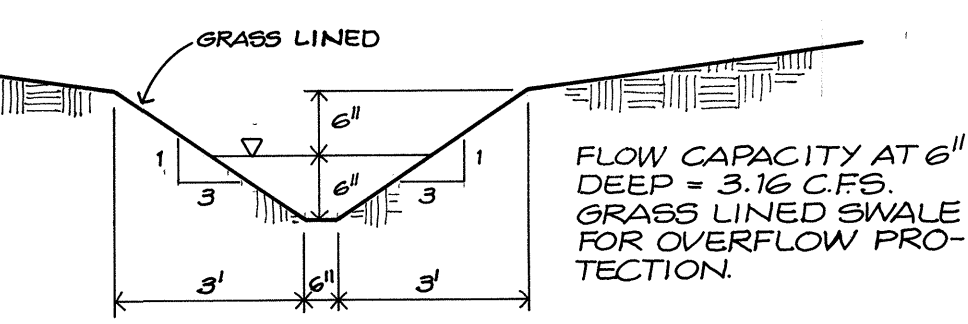
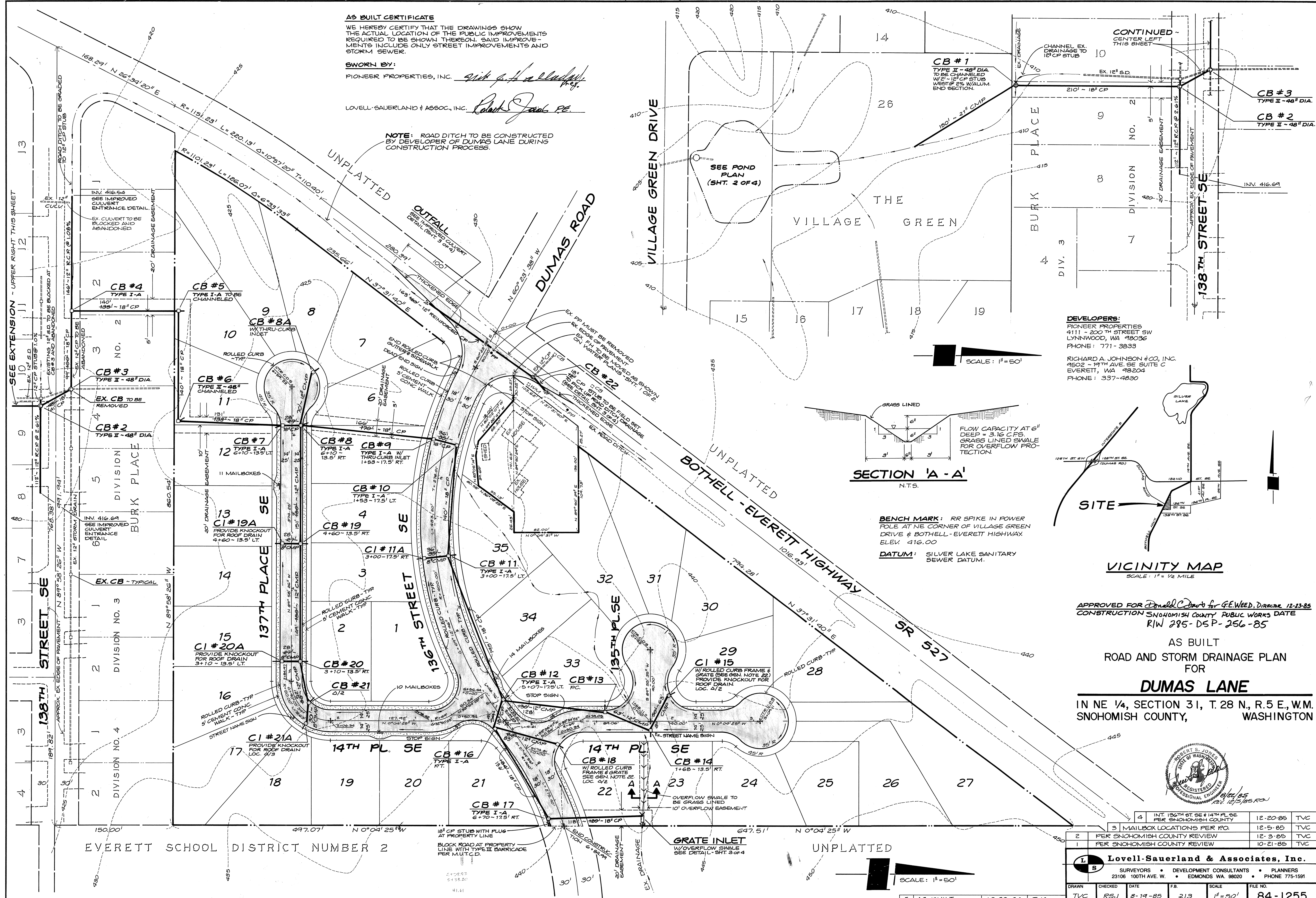
WE HEREBY CERTIFY THAT THE DRAWINGS SHOW THE ACTUAL LOCATION OF THE PUBLIC IMPROVEMENTS REQUIRED TO BE SHOWN THEREON. SAID IMPROVEMENTS INCLUDE ONLY STREET IMPROVEMENTS AND STORM SEWER.

SWORN BY:

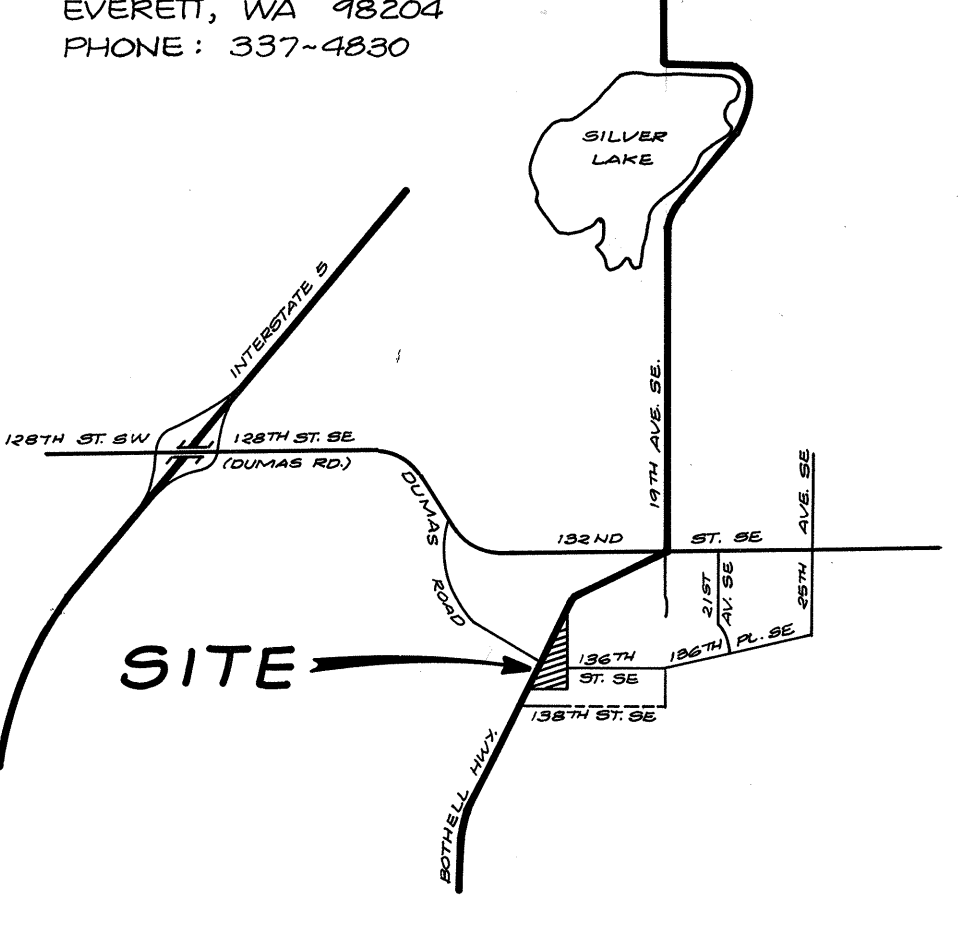
PIONEER PROPERTIES, INC. *Richard A. Johnson*

LOVELL SAUERLAND & ASSOC., INC. *Robert J. Sauerland*

NOTE: ROAD DITCH TO BE CONSTRUCTED BY DEVELOPER OF DUMAS LANE DURING CONSTRUCTION PROCESS.



BENCH MARK: RR SPIKE IN POWER POLE AT NE CORNER OF VILLAGE GREEN DRIVE & BOTHELL-EVERETT HIGHWAY. ELEV. 416.00
DATUM: SILVER LAKE SANITARY SEWER DATUM.



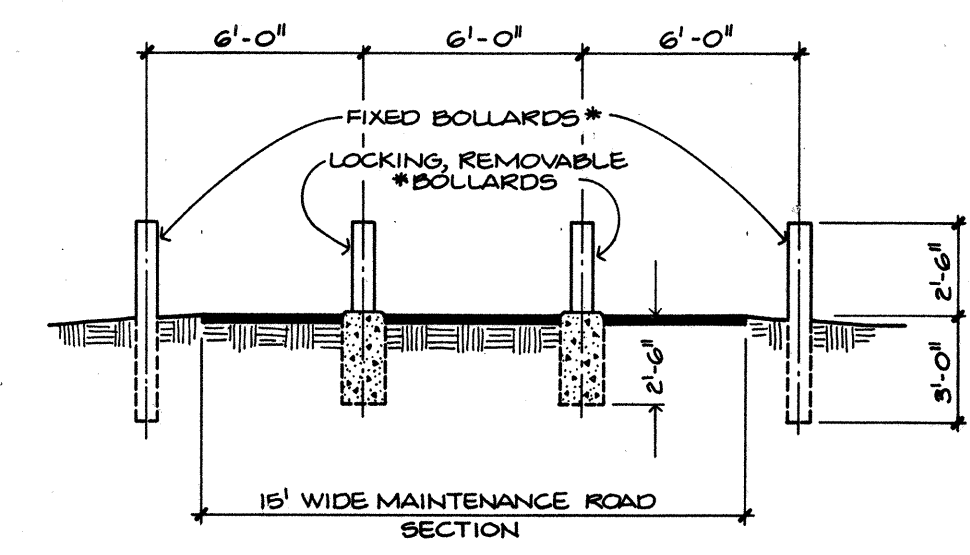
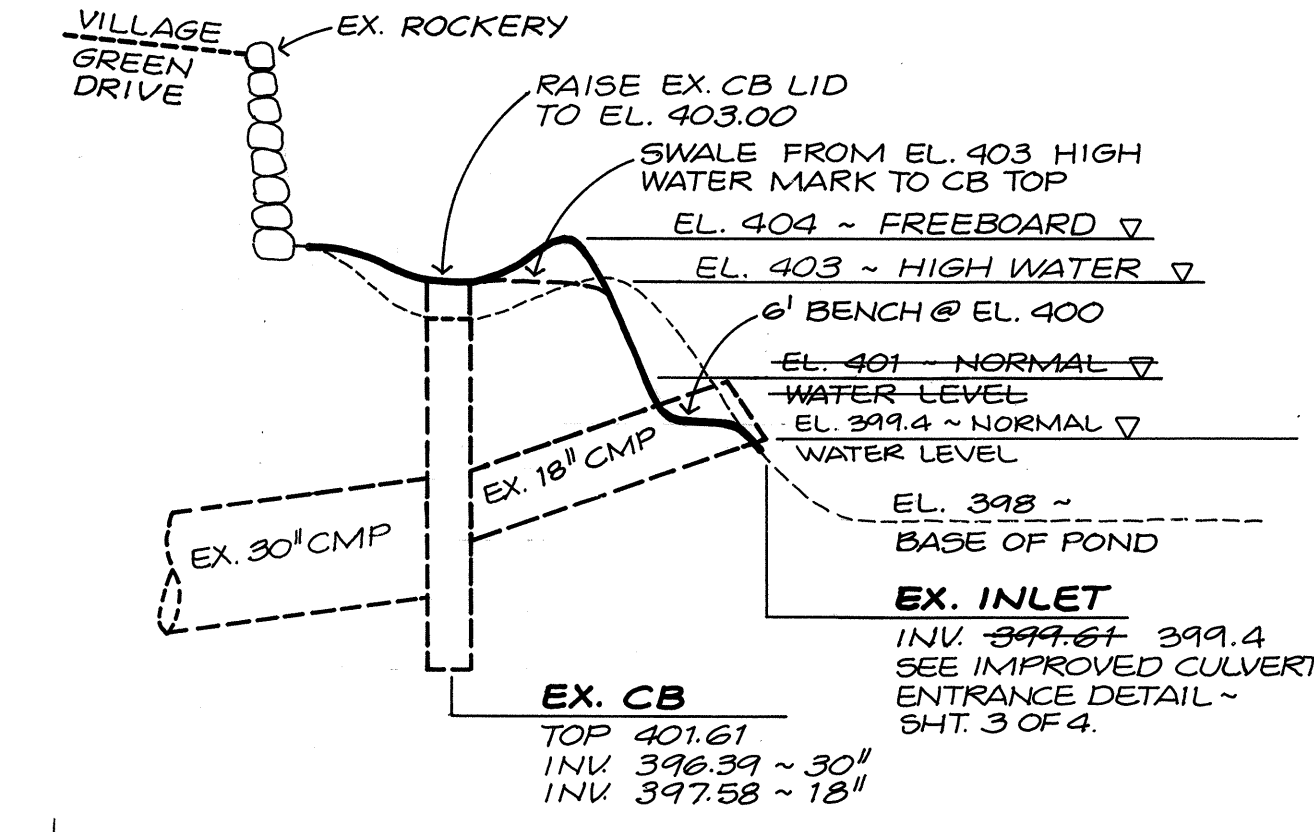
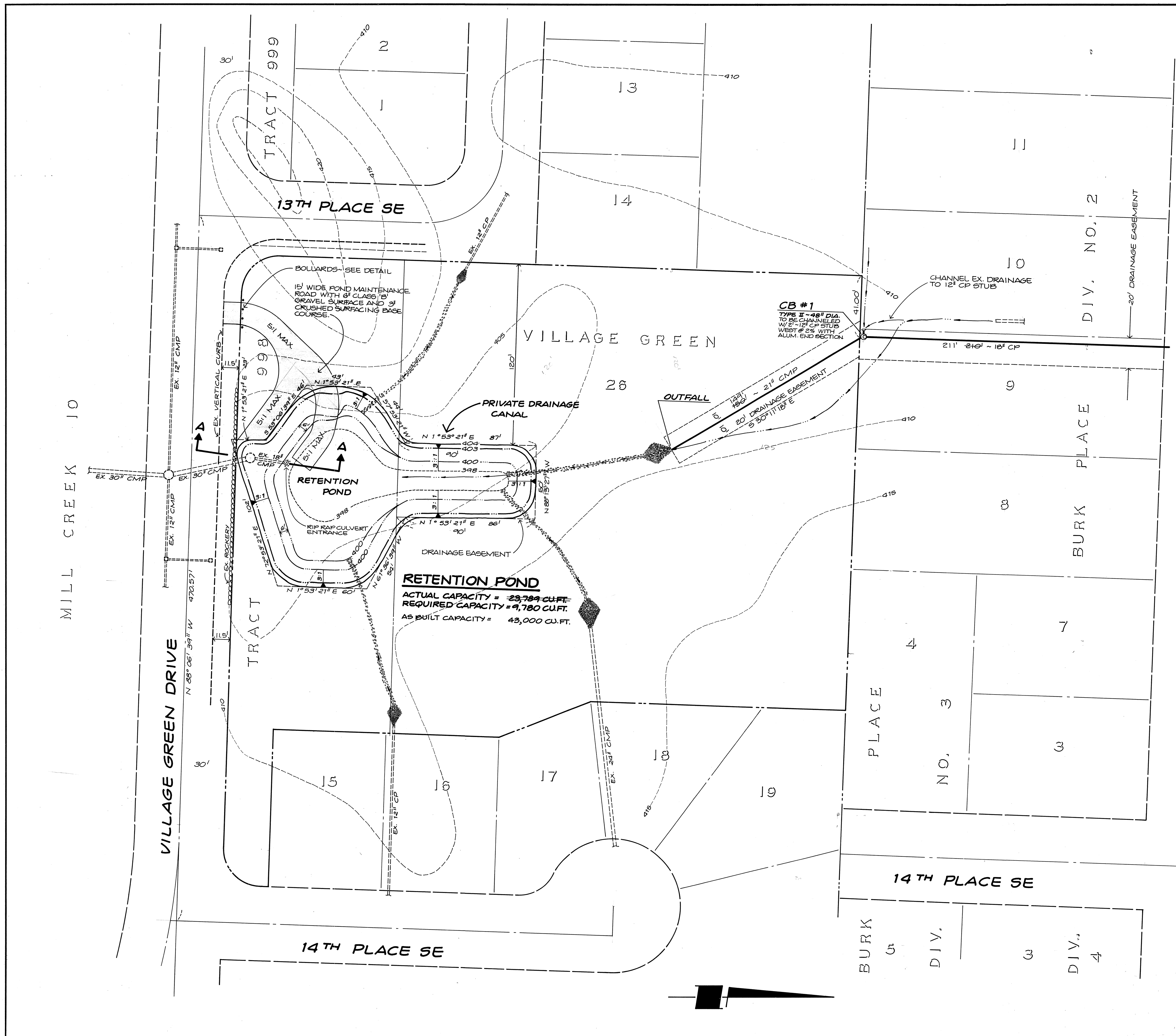
APPROVED FOR *Donald C. ...* for *GEWEED, DIRECTOR* 12-23-85
 CONSTRUCTION SNOHOMISH COUNTY PUBLIC WORKS DATE
 RW 285-DS P-256-85

**AS BUILT
 ROAD AND STORM DRAINAGE PLAN
 FOR
 DUMAS LANE**
 IN NE 1/4, SECTION 31, T.28 N., R.5 E., W.M.
 SNOHOMISH COUNTY, WASHINGTON



4	INT. 136TH ST. SE @ 14TH PL. SE PER SNOHOMISH COUNTY	12-20-85	TVC
2	3 MAILBOX LOCATIONS PER P.O.	12-5-85	TVC
2	PER SNOHOMISH COUNTY REVIEW	12-3-85	TVC
1	PER SNOHOMISH COUNTY REVIEW	10-21-85	TVC

LS Lovell-Sauerland & Associates, Inc.		SURVEYORS		DEVELOPMENT CONSULTANTS		PLANNERS	
23106 100TH AVE. W.		EDMONDS WA. 98020		PHONE 775-1591			
DRAWN	CHECKED	DATE	FB.	SCALE	FILE NO.		
TVC	RSJ	8-19-85	213	1" = 50'	84-1255		



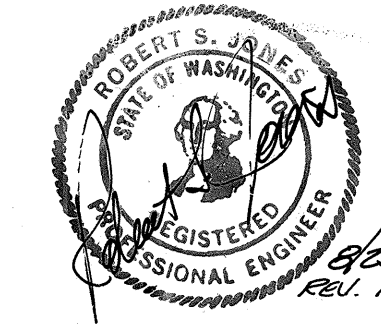
* BOLLARDS TO BE 6" X 6" ROUGH WOOD POSTS - PENAL TREATED.
N.T.S.

BENCH MARK: RR SPIKE IN POWER POLE AT NE CORNER OF VILLAGE GREEN DRIVE AND BOTHELL - EVERETT HIGHWAY. ELEV. 416.00
DATUM: SILVER LAKE SANITARY SEWER DATUM.

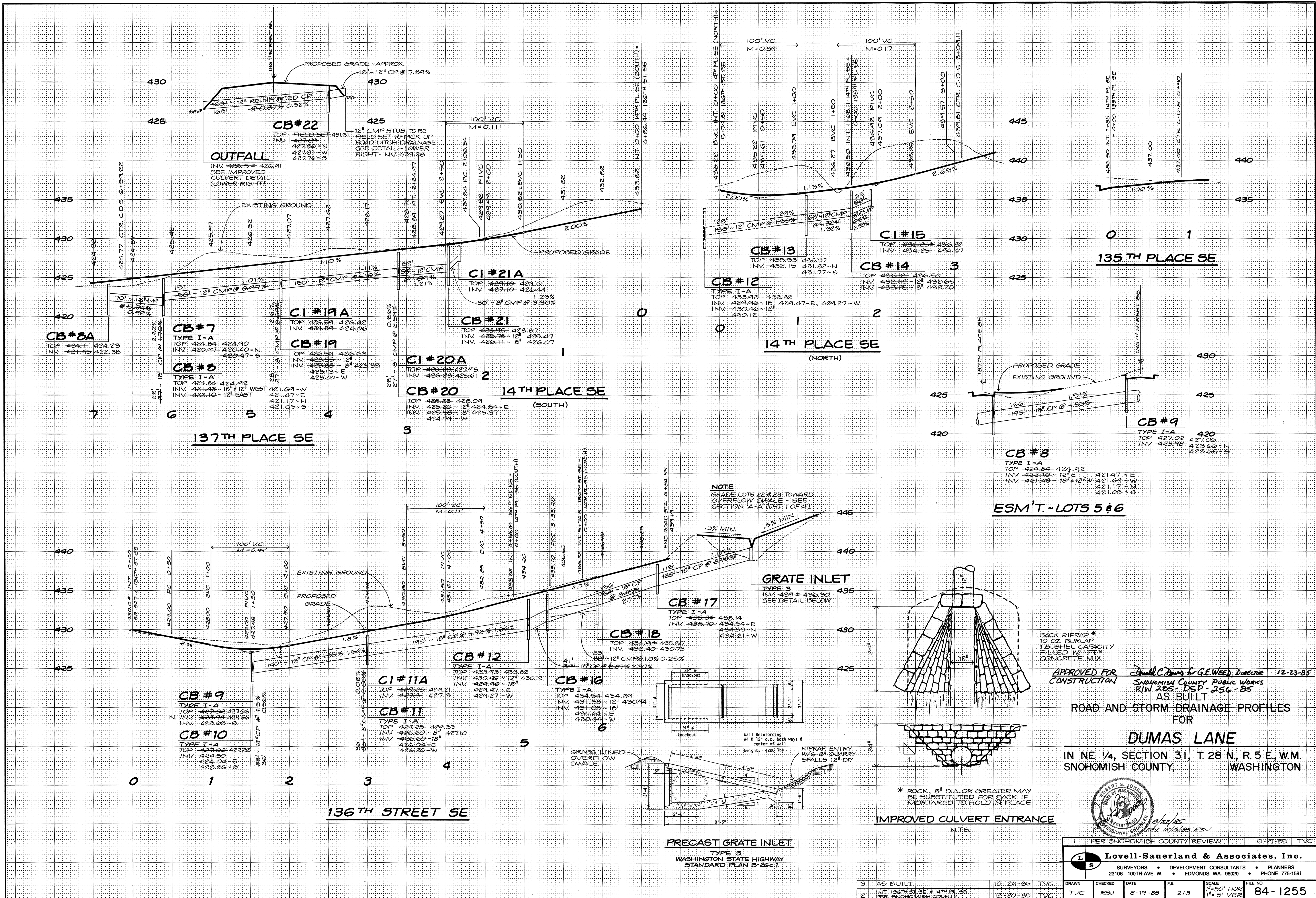
APPROVED FOR *Small* *Drawn* by G.E. WOOD, Director 12-23-85
CONSTRUCTION SNOHOMISH COUNTY PUBLIC WORKS DATE R/W 285-DSP-256-85

AS BUILT
POND PLAN
FOR
DUMAS LANE

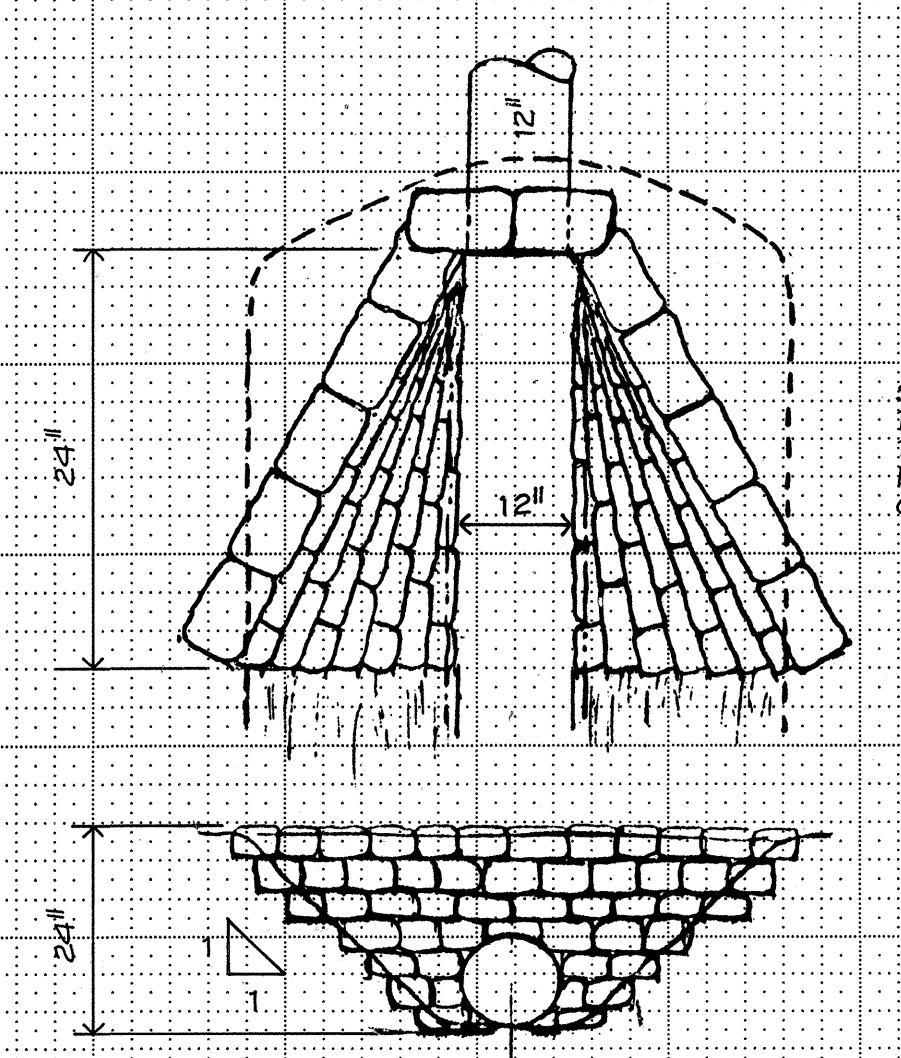
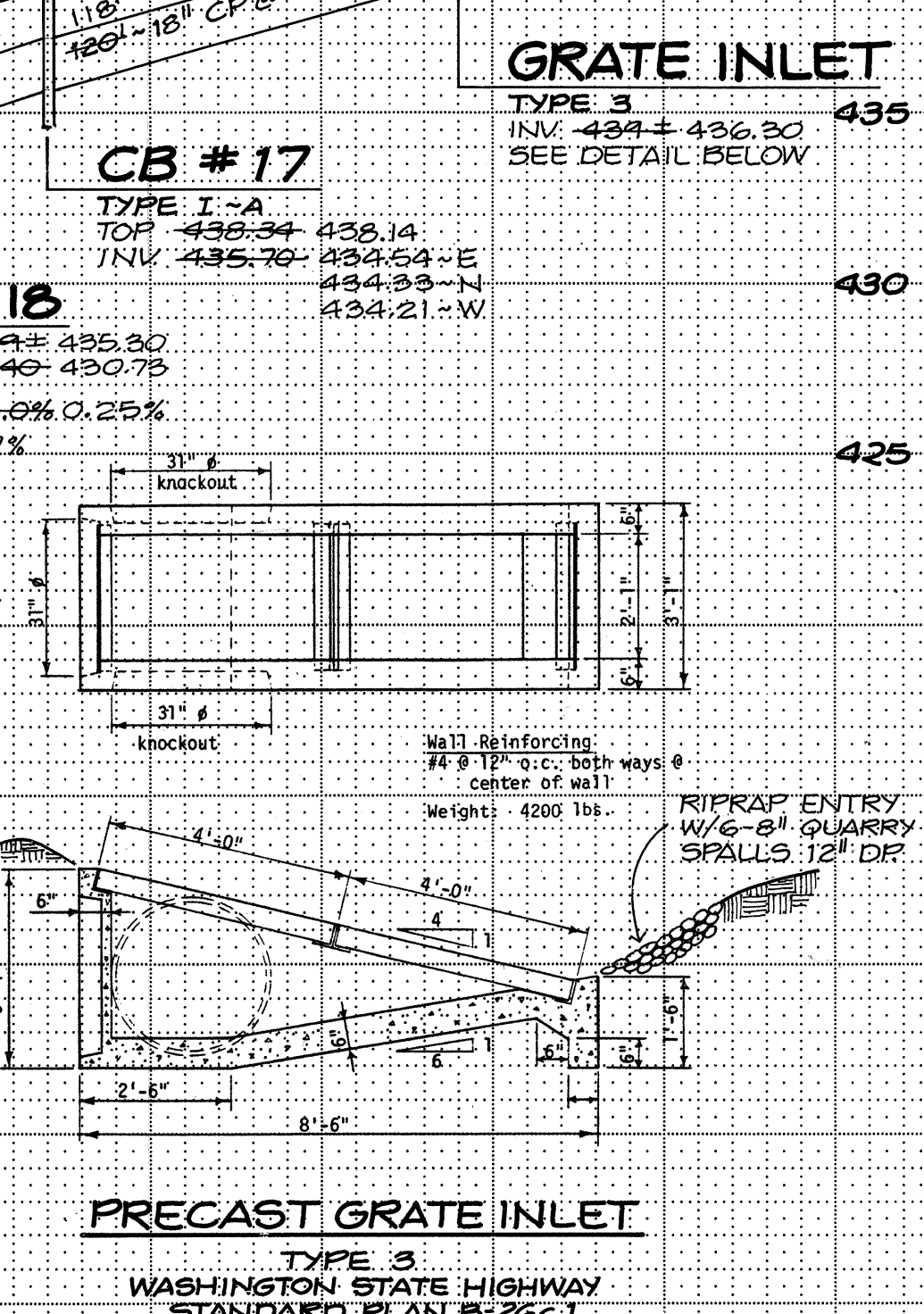
IN NE 1/4, SECTION 31, T. 28 N., R. 5 E., W.M. SNOHOMISH COUNTY, WASHINGTON



2	AS BUILT	10-29-86	TVC
1	PER SNOHOMISH COUNTY REVIEW	10-21-85	TVC
L Lovell-Sauerland & Associates, Inc. SURVEYORS • DEVELOPMENT CONSULTANTS • PLANNERS 23106 100TH AVE. W. • EDMONDS WA 98020 • PHONE 775-1591			
DRAWN	CHECKED	DATE	F.B.
TVC	RSJ	8-19-85	191 & 213
SCALE		FILE NO.	
1" = 30'		84-1255	



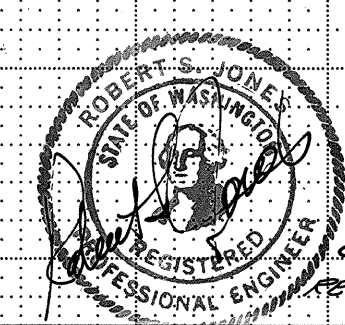
NOTE
GRADE LOTS 22 & 23 TOWARD
OVERFLOW SWALE - SEE
SECTION 'A-A' (SHT. 1 OF 4)



SACK RIPRAP *
10 OZ. BURLAP
1 BUSHEL CAPACITY
FILLED W/1 FT³
CONCRETE MIX

APPROVED FOR CONSTRUCTION
Small C.D. Drawn by G.E. WEED, Director
SNOWHOMISH COUNTY PUBLIC WORKS
RIN 205 - DSP - 256 - B5
AS BUILT

ROAD AND STORM DRAINAGE PROFILES FOR
DUMAS LANE
IN NE 1/4, SECTION 31, T 28 N, R 5 E, W.M.
SNOWHOMISH COUNTY, WASHINGTON



PER SNOHOMISH COUNTY REVIEW		10-21-85	TVC
Lovell-Sauerland & Associates, Inc.			
SURVEYORS • DEVELOPMENT CONSULTANTS • PLANNERS		23106 100TH AVE. W. • EDMONDS WA. 98020 • PHONE 775-1991	
3	AS BUILT	10-29-86	TVC
2	INT. 136TH ST. SE & 14TH PL. SE PER SNOHOMISH COUNTY	12-20-85	TVC
DRAWN	CHECKED	DATE	FB
TVC	RSU	8-19-85	213
SCALE		FILE NO.	
1" = 50' HOR 1" = 5' VER		84-1255	

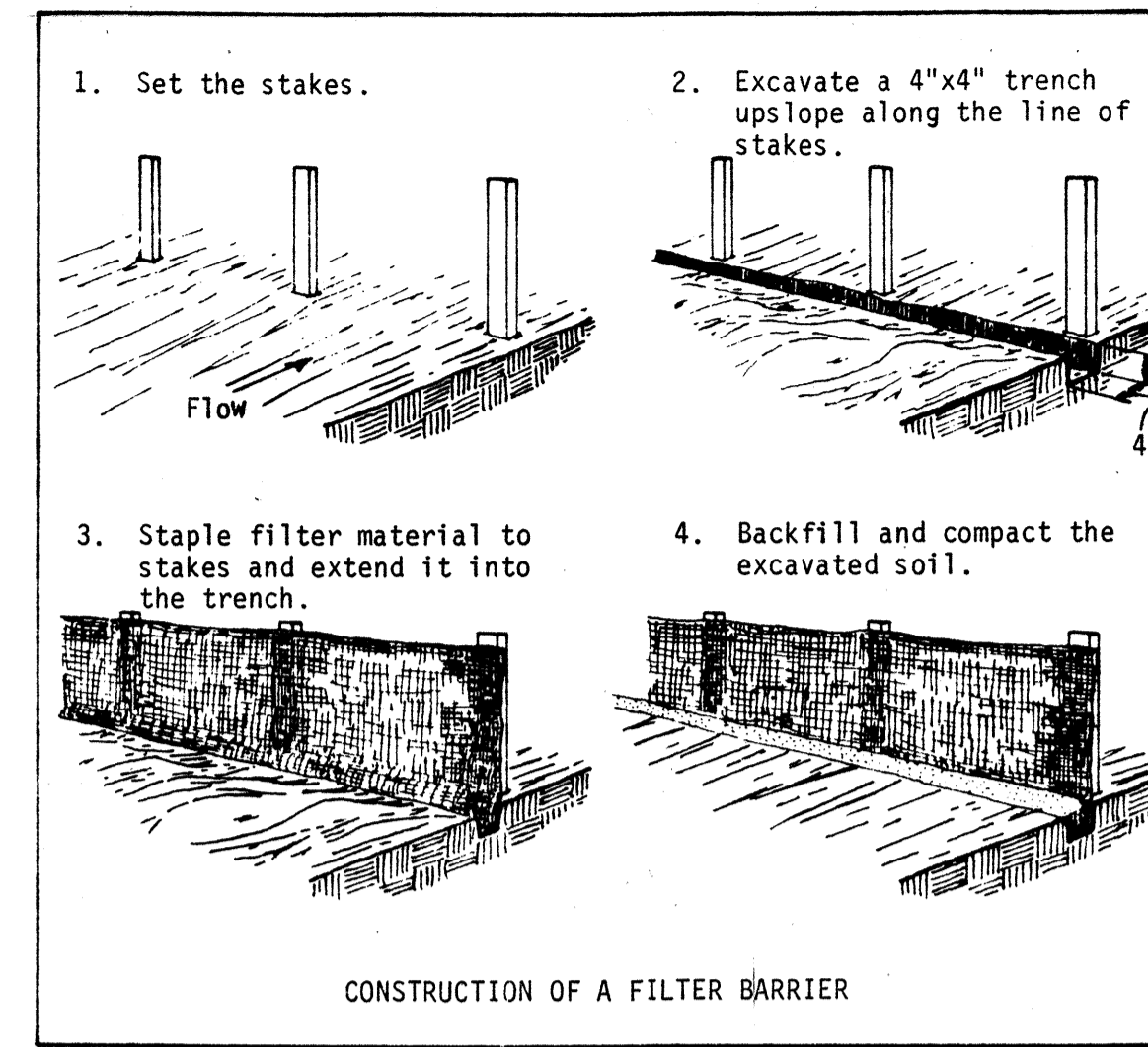
TEMPORARY CONSTRUCTION ENTRANCE

(PLACE V.D.H. #T. COARSE AGGREGATE NO. 1 (2"-3" STONE) OR EQUAL, (REFER TO W.S.D.O.T. STD. SPEC. 8-15.3(6) AND 9-03.9(1)), AT EDGE OF EXISTING ASPHALT (50' LONG, 28' WIDE AND 6" DEEP))

TEMPORARY CONSTRUCTION ENTRANCE MAINTENANCE

THE ENTRANCE SHALL BE MAINTAINED IN A CONDITION WHICH WILL PREVENT TRACKING OF FLOW OF MUD ONTO PUBLIC RIGHTS OF WAY. THIS MAY REQUIRE PERIODIC TOP DRESSING WITH 2 INCH STONE, AS CONDITIONS DEMAND, AND REPAIR AND/OR CLEANOUT OF ANY STRUCTURES USED TO TRAP SEDIMENT. ALL MATERIALS SPILLED, DROPPED, WASHED, OR TRACKED FROM VEHICLES ONTO ROADWAY OR INTO STORM DRAINS MUST BE REMOVED IMMEDIATELY.

**3000 C.Y. CUT
2500 C.Y. FILL**



Filter Barrier: This sediment barrier may be constructed using burlap or standard strength synthetic filter fabric. It is designed for low or moderate flows not exceeding 1 cfs. See Plate 1.06a.

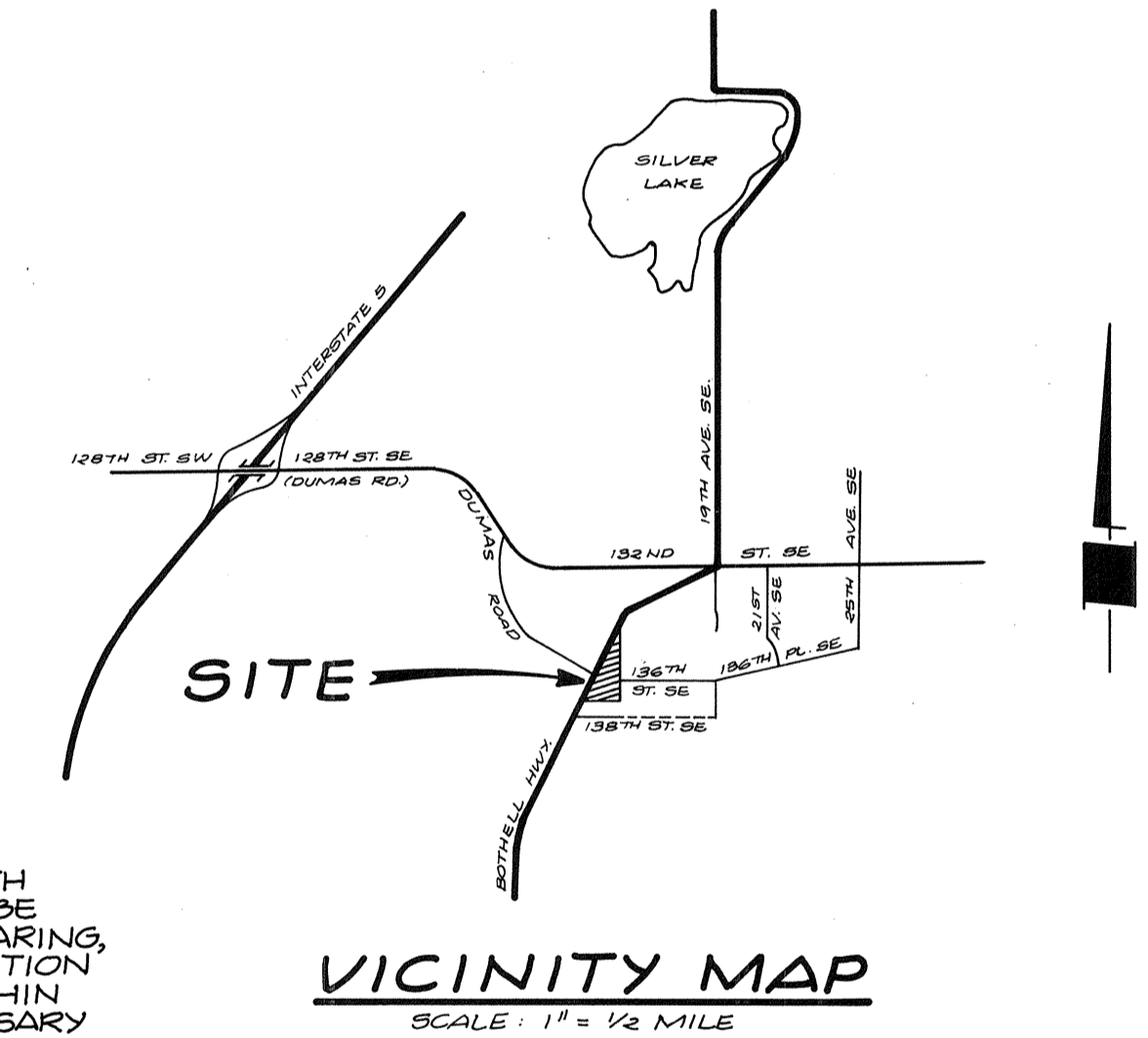
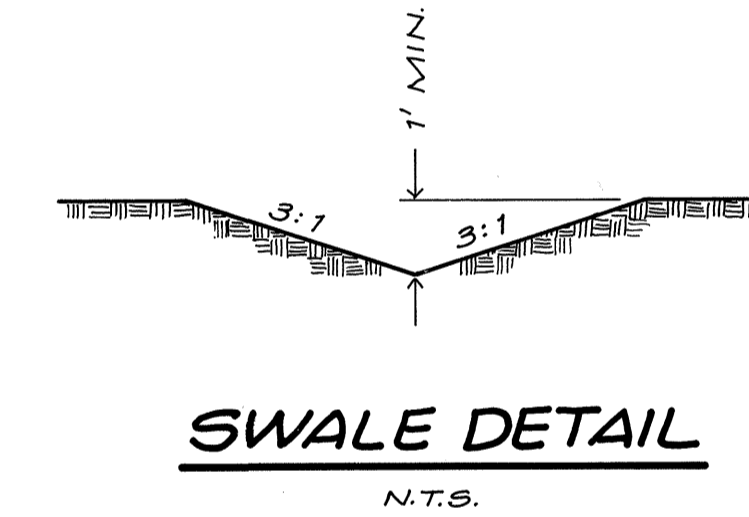
- The height of a filter barrier shall be a minimum of 15 inches and shall not exceed 18 inches.
- Burlap or standard strength synthetic filter fabric shall be purchased in a continuous roll and cut to the length of the barrier to avoid the use of joints (and thus improve the strength and efficiency of the barrier).
- The stakes shall be spaced a maximum of 3 feet apart at the barrier location and driven securely into the ground (minimum of 8 inches).
- A trench shall be excavated approximately 4 inches wide and 4 inches deep along the line of stakes and upslope from the barrier.
- The filter material shall be stapled to the wooden stakes, and 8 inches of the fabric shall be extended into the trench. Heavy duty wire staples at least 1/2-inch long shall be used. Filter material shall not be stapled to existing trees.
- The trench shall be backfilled and the soil compacted over the filter material.
- If a filter barrier is to be constructed across a ditch line or swale, the barrier shall be of sufficient length to eliminate end flow, and the plan configuration shall resemble an arc or horseshoe with the ends oriented upslope (Plate 1.06b).
- Filter barriers shall be removed when they have served their useful purpose, but not before the upslope area has been permanently stabilized.

MAINTENANCE

- Silt fences and filter barriers shall be inspected immediately after each rainfall and at least daily during prolonged rainfall. Any required repairs shall be made immediately.
- Should the fabric on a silt fence or filter barrier decompose or become ineffective prior to the end of the expected usable life and the barrier still be necessary, the fabric shall be replaced promptly.
- Sediment deposits should be removed after each storm event. They must be removed when deposits reach approximately one-half the height of the barrier.
- Any sediment deposits remaining in place after the silt fence or filter barrier is no longer required shall be dressed to conform with the existing grade, prepared and seeded.

BENCH MARK: RR SPIKE IN POWER POLE AT NE CORNER OF VILLAGE GREEN DRIVE AND BOTHELL EVERETT HIGHWAY. ELEV. 416.00

DATUM: SILVER LAKE WATER DISTRICT (SEWER PLAN)



NOTE: A 20' WIDE NATIVE GROWTH PROTECTION EASEMENT SHALL BE MAINTAINED AS SHOWN. NO CLEARING, GRADING, FILLING, OR CONSTRUCTION OF ANY KIND SHALL OCCUR WITHIN THIS AREA EXCEPT FOR NECESSARY UTILITY INSTALLATIONS. REMOVAL OF TREES BY THE PROPERTY OWNER SHALL BE LIMITED TO THOSE WHICH ARE DEAD, DISEASED, OR HAZARDOUS.

**GRADING AND
TEMPORARY EROSION CONTROL PLAN ONLY
FOR**

DUMAS LANE

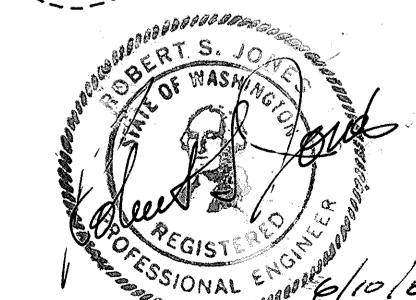
IN NE 1/4, SECTION 31, T. 28 N., R. 5 E., W.M. SNOHOMISH COUNTY, WASHINGTON

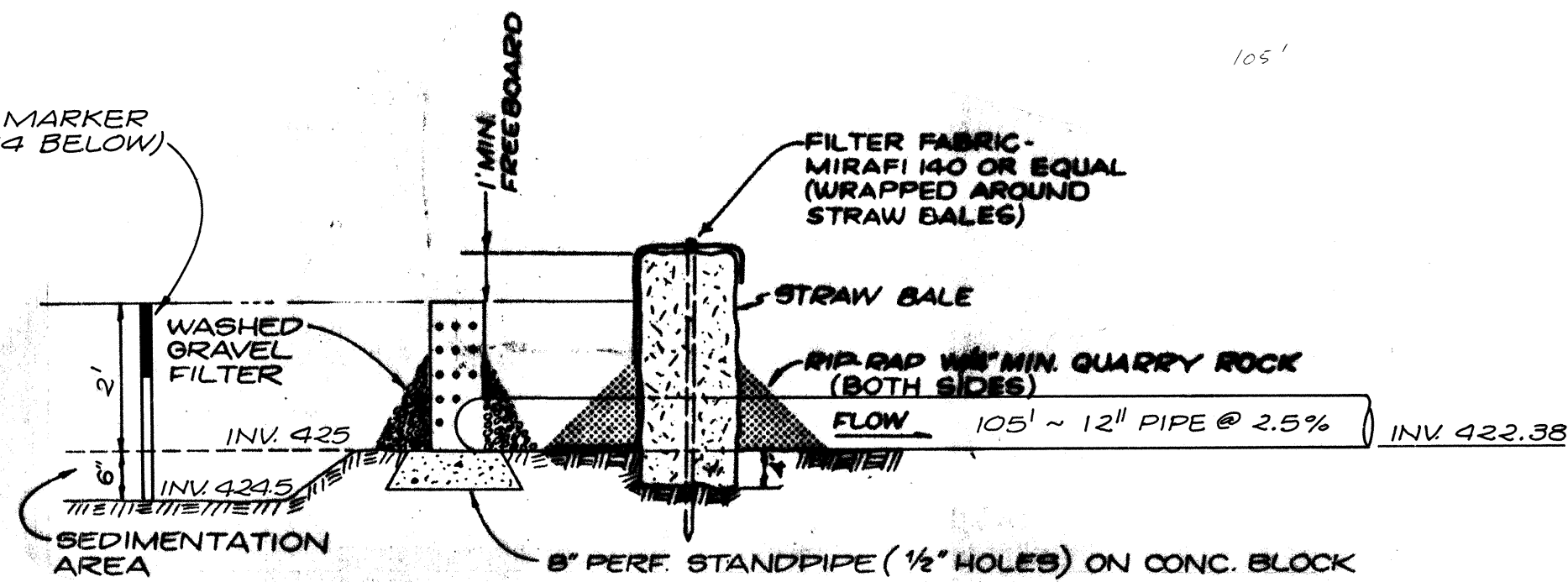
PERMANENT STORM DRAINAGE SYSTEM IS NOT A PART OF THIS APPROVAL.

APPROVED FOR CONSTRUCTION *[Signature]* 9/15/85 DATE

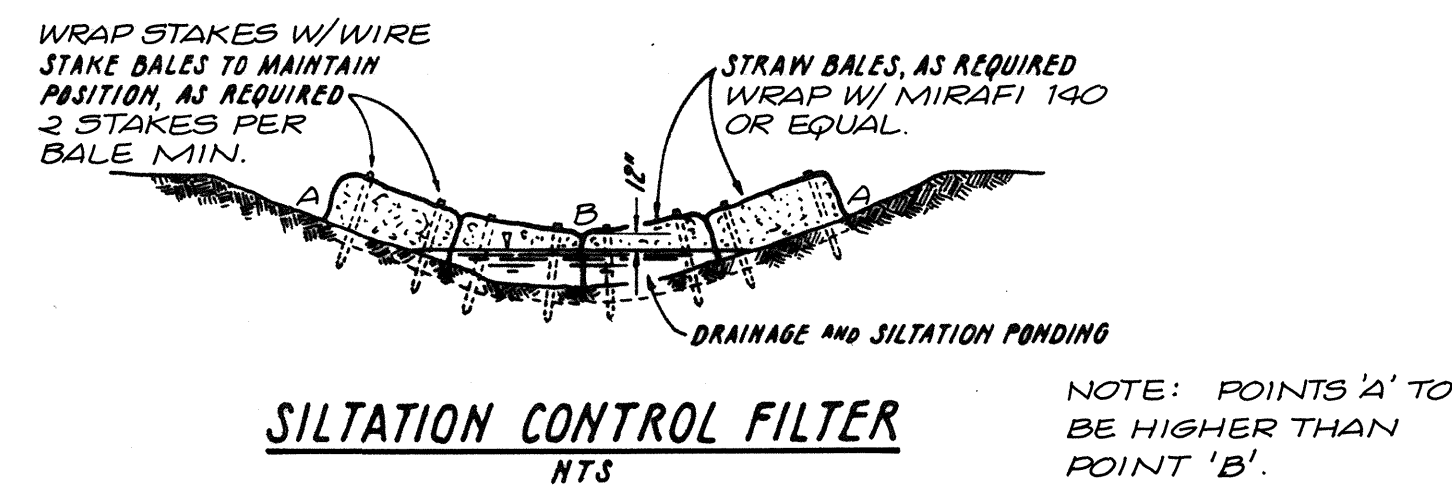
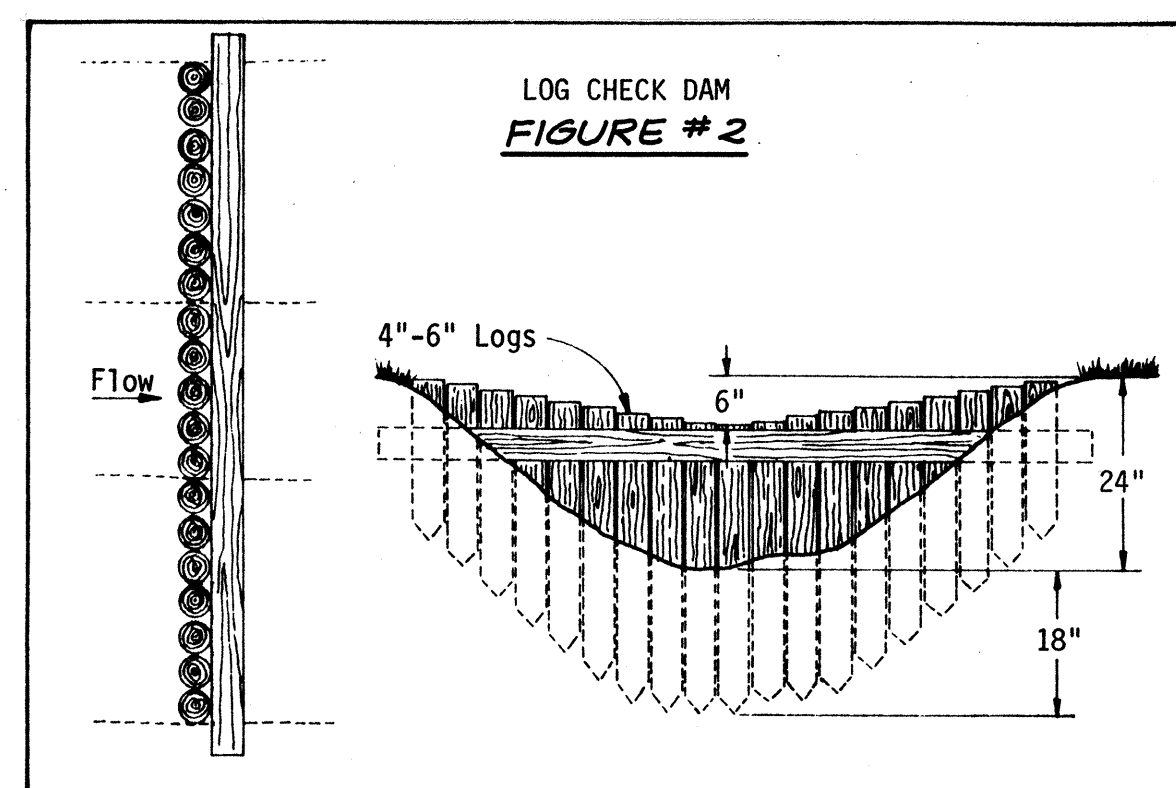
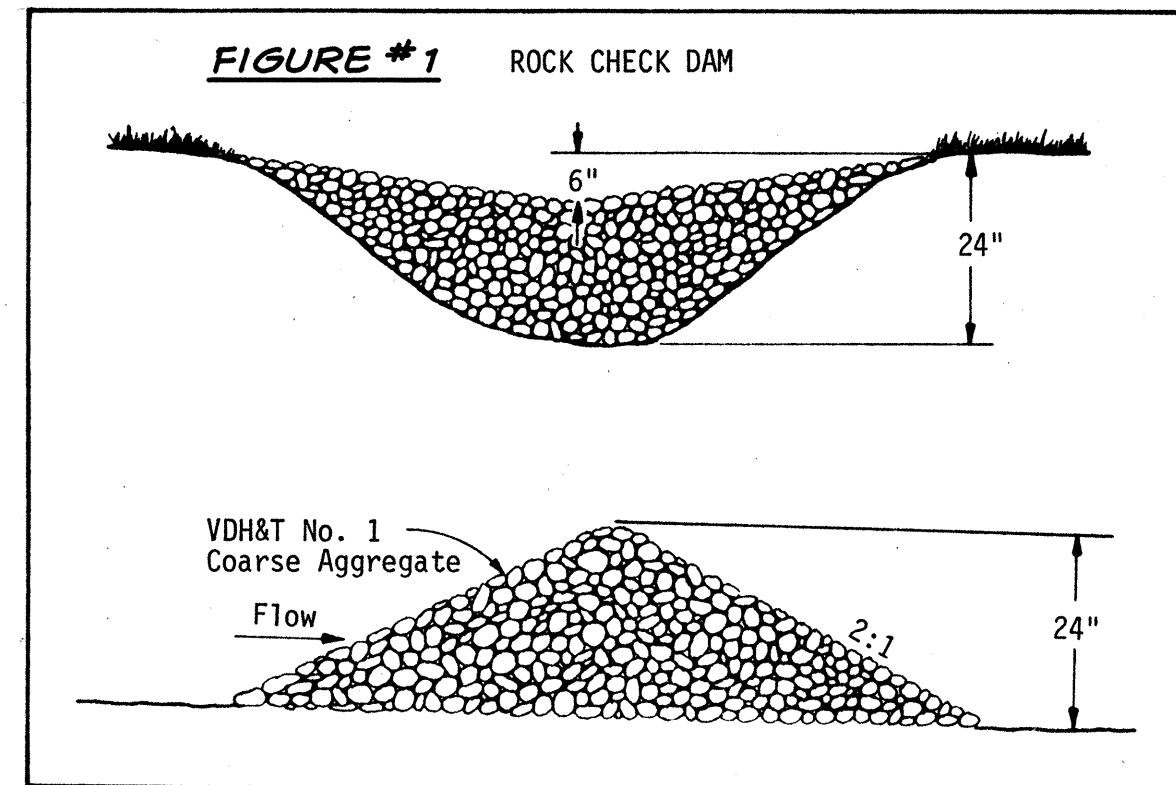
NOTE: IF IMPROVEMENTS ARE NOT INSTALLED UNDER A NORMAL PROGRESSION OF EVENTS AND CLEARING MUST REMAIN THRU THE WINTER, THE PROPERTY MUST BE COVERED WITH STRAW MULCH, APPROXIMATELY 1 1/2 - 2 TONS PER ACRE TO PREVENT EROSION STARTING DUE TO RAIN - DROP VELOCITY.

3	NATIVE GROWTH PROTECTION ESM/IT	9-5-85	TVC
2	LOT GRADING	8-20-85	TVC
1	PER COUNTY REVIEW	6-26-85	TVC
Lovell-Sauerland & Associates, Inc.			
SURVEYORS		DEVELOPMENT CONSULTANTS • PLANNERS	
23106 100TH AVE. W.		EDMONDS WA 98020 • PHONE 775-1591	
DRAWN	CHECKED	DATE	F.B.
TVC	RSJ	6-4-85	213
SCALE	FILE NO.		
1" = 50'	84-1255		





SECTION THRU POND
N.T.S.
(SECTION 'A-A')



MAINTENANCE

1. STRAW BALE BARRIERS SHALL BE INSPECTED IMMEDIATELY AFTER EACH RAINFALL AND AT LEAST DAILY DURING PROLONGED RAINFALL.
2. CLOSE ATTENTION SHALL BE PAID TO THE REPAIR OF DAMAGED BALES, END RUNS AND UNDERCUTTING BENEATH BALES.
3. NECESSARY REPAIRS TO BARRIERS OR REPLACEMENT OF BALES SHALL BE ACCOMPLISHED PROMPTLY.
4. SEDIMENT DEPOSITS SHOULD BE REMOVED AFTER EACH RAINFALL. THEY MUST BE REMOVED WHEN THE LEVEL OF DEPOSITION REACHES APPROXIMATELY ONE-HALF THE HEIGHT OF THE BARRIER.
5. ANY SEDIMENT DEPOSITS REMAINING IN PLACE AFTER THE STRAW BALE BARRIER IS NO LONGER REQUIRED SHALL BE DRESSED TO CONFORM TO THE EXISTING GRADE, PREPARED AND SEEDED.

CHECK DAM NOTES

Stone check dams should be constructed of VDH&T Aggregate No. 1 (2- to 3-inch stone). The stone should be placed according to the configuration in Figure #1. Hand or mechanical placement will be necessary to achieve complete coverage of the ditch or swale and to insure that the center of the dam is lower than the edges.

Log check dams should be constructed of 4- to 6-inch logs salvaged from clearing operations on site, if possible. The logs should be embedded into the soil at least 18 inches. The 6-inch lower height required at the center can be achieved either by careful placement of the logs or by cutting the logs after they are in place.

MAINTENANCE

Check dams should be checked for sediment accumulation after each significant rainfall. Sediment should be removed when it reaches one half of the original height or before.

Regular inspections should be made to insure that the center of the dam is lower than the edges. Erosion caused by high flows around the edges of the dam should be corrected immediately.

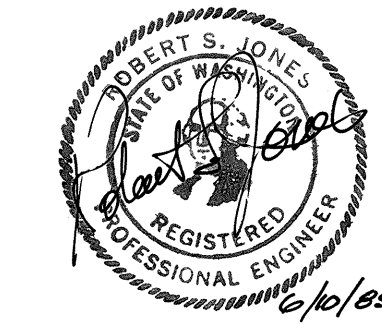
GENERAL NOTES

1. ALL WORK AND MATERIALS SHALL BE IN ACCORDANCE WITH SNOHOMISH COUNTY STANDARDS AND SPECIFICATIONS.
2. PRIOR TO ANY SITE WORK, THE CONTRACTOR SHALL CONTACT THE FIELD COORDINATOR FOR PLATS, UTILITIES AND DRAINAGE, AT 259-9464, TO ARRANGE FOR THE REQUIRED INSPECTIONS.
3. ALL SITE WORK MUST COMPLY TO CHAPTER 70 OF THE BUILDING CODE.
4. THE TEMPORARY EROSION/SEDIMENTATION CONTROL FACILITY SHALL BE CONSTRUCTED PRIOR TO ANY GRADING OR EXTENSIVE LAND CLEARING IN ACCORDANCE WITH THE APPROVED TEMPORARY EROSION/SEDIMENTATION CONTROL PLAN. THESE FACILITIES MUST BE SATISFACTORILY MAINTAINED UNTIL CONSTRUCTION AND LANDSCAPING IS COMPLETED AND THE POTENTIAL FOR ONSITE EROSION HAS PASSED.
5. TEMPORARY SILTATION CONTROL FILTERS SHALL BE APPROVED FILTER FABRICS.
6. TEMPORARY EROSION SEDIMENTATION CONTROL FACILITIES SHALL BE CONSTRUCTED BY PLACING SILTATION CONTROL FILTERS AROUND SWALES (NATURAL OR MAN-MADE) AND SHALL BE MAINTAINED IN A SATISFACTORY CONDITION UNTIL SUCH TIME THAT LAND CLEARING AND/OR CONSTRUCTION OF PERMANENT DRAINAGE FACILITIES ARE COMPLETED, OPERATIONAL AND THEN RETURNED TO ORIGINAL GROUND CONDITIONS.
7. PROVIDE AND MAINTAIN TEMPORARY SEDIMENTATION COLLECTION FACILITIES TO INSURE SEDIMENT-LADEN WATER DOES NOT ENTER THE NATURAL DRAINAGE SYSTEM. THESE FACILITIES MUST BE IN OPERATION PRIOR TO CLEARING AND BUILDING CONSTRUCTION, AND SATISFACTORILY MAINTAINED UNTIL CONSTRUCTION AND LANDSCAPING ARE COMPLETED AND POTENTIAL FOR ON-SITE EROSION HAS PASSED.
8. BERMS AND SWALES SHALL BE CONSTRUCTED AS NECESSARY TO DIRECT ALL SEDIMENT-LADEN WATER TO POLLUTION CONTROL FACILITIES. WHERE POSSIBLE, MAINTAIN NATURAL VEGETATION FOR SILT CONTROL.
9. INTERIOR SLOPES OF ALL TEMPORARY RETENTION FACILITIES SHALL BE 3:1 MAXIMUM.
10. APPROVAL OF THIS TEMPORARY EROSION SEDIMENTATION CONTROL PLAN DOES NOT CONSTITUTE AN APPROVAL OF DESIGN, SIZE, NOR LOCATION OF PIPES, RESTRICTORS, CHANNELS, OR RETENTION FACILITIES, BUT IS AN APPROVAL OF THE TEMPORARY EROSION SEDIMENTATION CONTROL PLAN ONLY.
11. STOCKPILES ARE TO BE LOCATED IN SAFE AREAS AND ADEQUATELY PROTECTED BY TEMPORARY SEEDING AND MULCHING. HYDROSEED PREFERRED.
12. ALL FILL SHALL BE PLACED ON STABLE EARTH. THE GROUND SURFACE SHALL BE PREPARED TO RECEIVE FILL BY REMOVING VEGETATION, NON-COMPLYING FILL, TOPSOIL AND OTHER UNSUITABLE MATERIALS, SCARIFYING TO PROVIDE A BOND WITH THE NEW FILL.
13. ALL FILLS SHALL BE COMPACTED TO A MINIMUM OF 95% OF MAXIMUM DENSITY BY MODIFIED PROCTOR TEST DETERMINED BY U.B.C. STANDARD NO. 70-1, FIELD DENSITY IN ACCORDANCE WITH U.B.C. STANDARD NO. 70-2.
14. ALL DISTURBED SLOPES SHALL BE SEEDED WITH A PERENNIAL GROUND COVER (GRASS) TO PREVENT EROSION.
15. AREAS TO BE ROUGH GRADED WITH FINISH GRADING TO FOLLOW NEAR PROJECT COMPLETION ARE TO BE SEEDED WITH ANNUAL, PERENNIAL OR HYBRID RYE GRASS. THIS ALSO INCLUDES PERIMETER DIKES AND THE SEDIMENT BASIN EMBANKMENT. HYDROSEED PREFERRED.
16. IMMEDIATELY FOLLOWING FINISH GRADING, PERMANENT VEGETATION (CONSISTING OF RAPID, PERSISTENT & LEGUME) WILL BE APPLIED. (MINIMUM 120#/ACRE). THIS IS TO INCLUDE:
 - 20% A. ANNUAL, PERENNIAL OR HYBRID RYE GRASS,
 - 40% B. CREEPING RED FESCUE, AND
 - 40% C. WHITE CLOVER.
 HYDROSEED PREFERRED.
17. IF IMPROVEMENTS ARE NOT INSTALLED UNDER A NORMAL PROGRESSION OF EVENTS AND CLEARING MUST REMAIN THROUGH THE WINTER, THE PROPERTY MUST BE COVERED WITH A STRAW MULCH, APPROX. 1 1/2 TONS PER ACRE TO PREVENT EROSION STARTING DUE TO RAINDROP VELOCITY.

PERMANENT STORM DRAINAGE SYSTEM IS NOT A PART OF THIS APPROVAL.

APPROVED FOR CONSTRUCTION *Robert L. Ben for G.E. Wood* 9/5/85 DATE

GRADING AND TEMPORARY EROSION CONTROL NOTES AND DETAILS FOR **DUMAS LANE** IN NE 1/4, SECTION 31, T.28 N., R.5 E., W.M. SNOHOMISH COUNTY, WASHINGTON



1 PER COUNTY REVIEW		6-26-85 TVC	
Lovell-Sauerland & Associates, Inc.			
SURVEYORS		DEVELOPMENT CONSULTANTS	
23106 100TH AVE. W.		EDMONDS WA. 98020	
PHONE 775-1591			
DRAWN	CHECKED	DATE	F.B.
TVC	RSJ	6-4-85	213
SCALE	FILE NO.		
N.T.S.	84-1255		